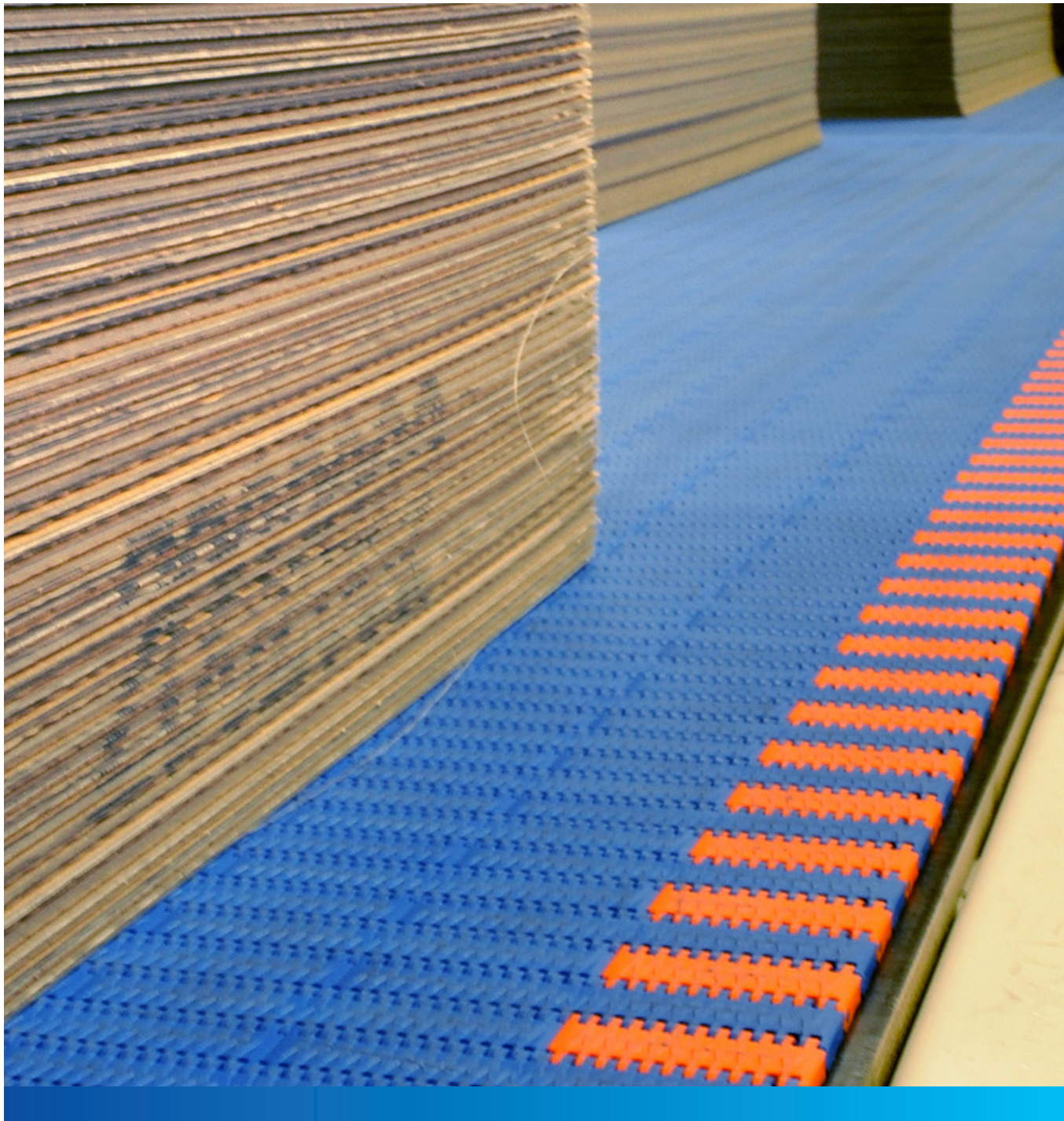
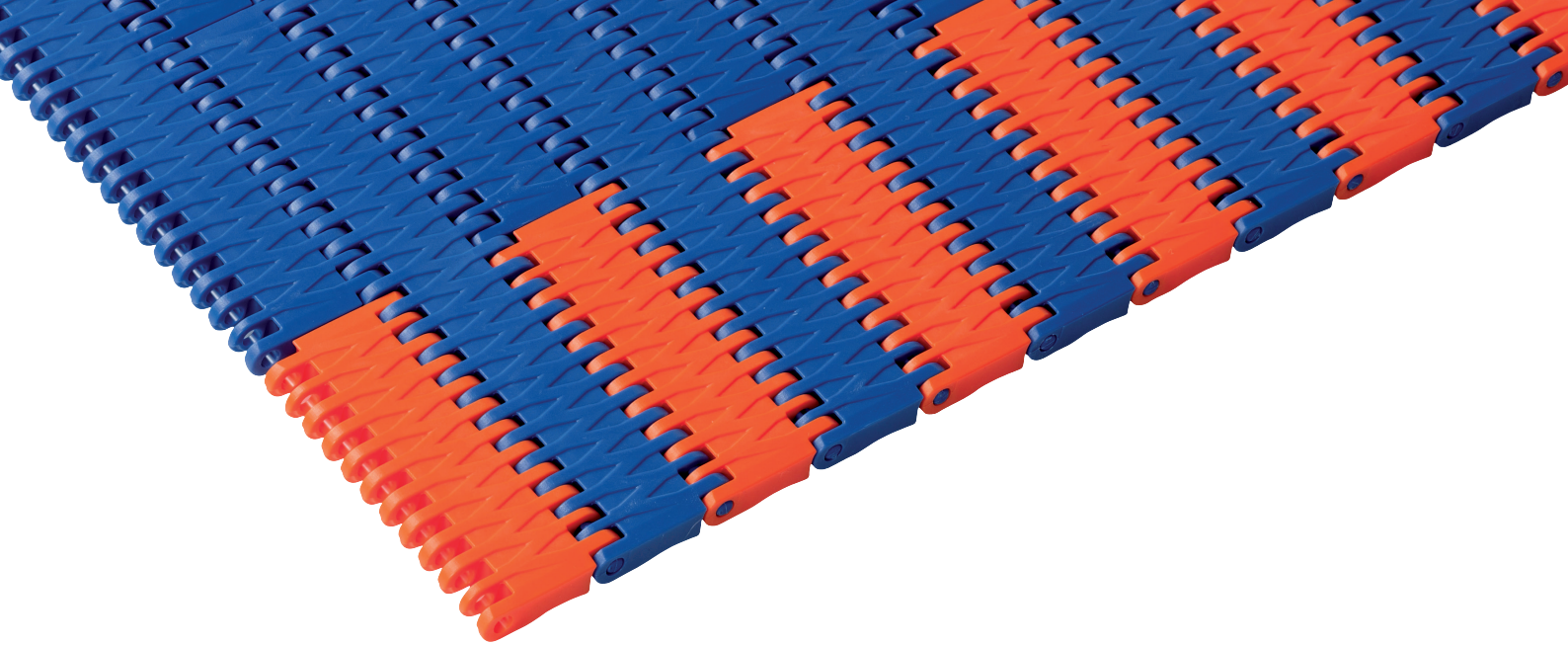


uni JCB - The next generation of plastic modular belts for corrugated





uni JCB - Improving corrugated industry safety with plastic modular belts

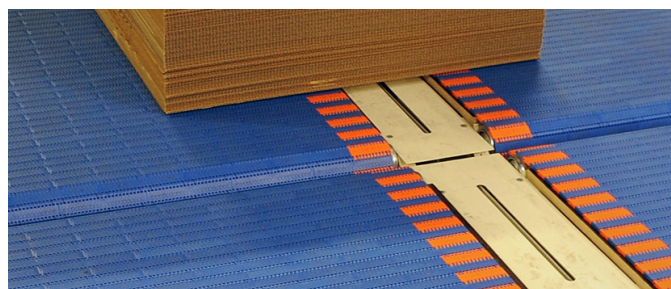
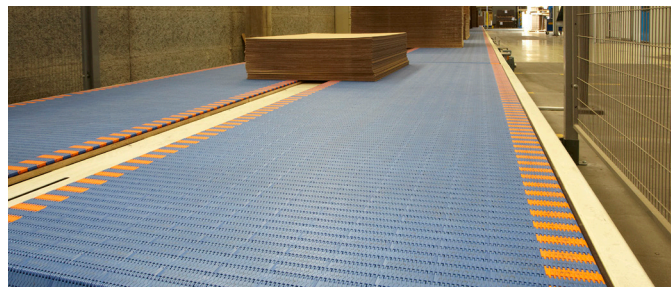
Ammeraal Beltech Modular has many years of experience operating Modular Belts within all types of corrugated production plants. A reputation for total reliability and excellent service is gained. But as a responsible business partner to the corrugated producers, new approaches are needed. Hence, the next generation product, uni JCB Modular Belt system, is developed.

Safety First

Observations of corrugated plant personnel walking on moving modular conveyor belts as part of their normal daily work routines led to design the uni JCB belt. This belt presents a new safety top surface Y profile tread pattern and high visibility belt edges.

Anything which can help to increase worker safety should always be a high priority and with increasing liability placed on plant owners and managers, the corrugated industry will highly appreciate this new extra contribution we make towards worker safety by means of the new uni JCB belt system.

The uni JCB belt features very high load capacity enabling longest possible conveyor sections and thus reducing number of transfer points. When combined with the new curved profiled belt underside, smoother running around conveyor terminal rollers and highest possible stack quality are maintained during transportation.



Safety First

Accident prevention rules require factory floors and areas where workers walk to be safe. Special protective measures should be taken where above average risk may be present. Moving conveyor belts upon which workers are required to walk as part of their normal working procedure demand special attention.

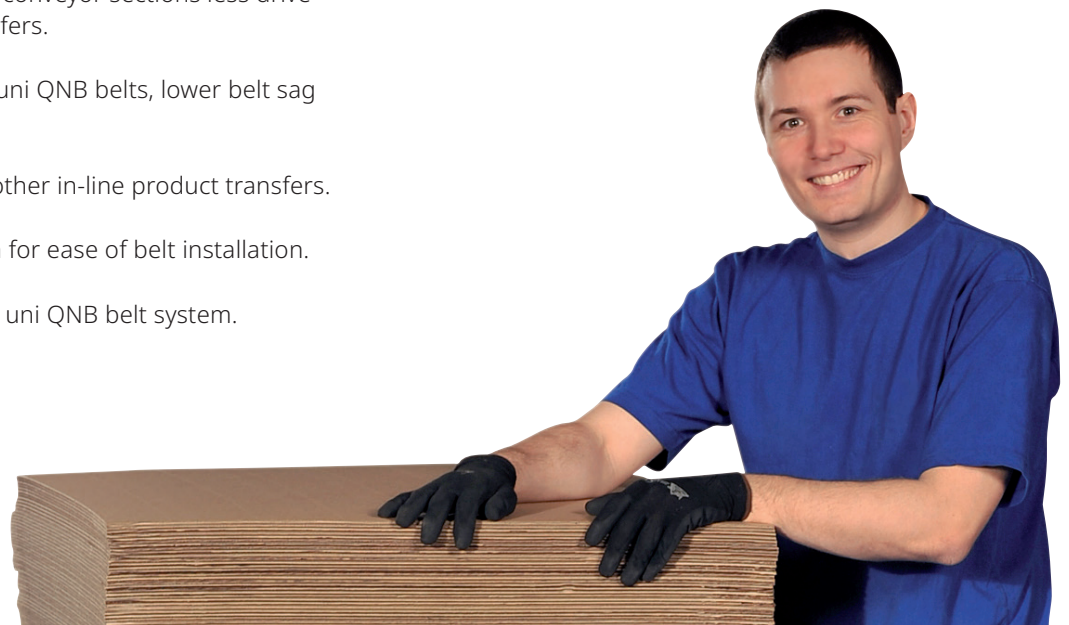


Ammeraal Beltech Modular – uni JCB

Lower total cost of ownership	Safe Walk	Plant efficiency
<ul style="list-style-type: none"> · Enables fully automatic transporting of corrugated stacks. 	<ul style="list-style-type: none"> · Y profile SAFETY top belt surface. 	<ul style="list-style-type: none"> · Safe reliable transportation of all corrugated products.
<ul style="list-style-type: none"> · Eliminates use of slip sheets for most corrugated products. 	<ul style="list-style-type: none"> · Appropriate surface grip for pedestrians crossing belts. 	<ul style="list-style-type: none"> · No elephant's feet on base of corrugated stacks.
<ul style="list-style-type: none"> · No contact pressure damage to lower corrugated sheets. 	<ul style="list-style-type: none"> · High visibility belt edges to outline movement zone edges. 	
<ul style="list-style-type: none"> · Clean hygienic contact surfaces, no dirt marking of sheets. 	<ul style="list-style-type: none"> · Chamfered belt edges to reduce trip risks. 	
<ul style="list-style-type: none"> · Low maintenance costs due to almost zero maintenance requirements. 		
<ul style="list-style-type: none"> · Long belt lifetimes, economical transport solution. 		

Belt Features

- High load capacity, longer conveyor sections less drive motors, less product transfers.
- Higher belt stiffness than uni QNB belts, lower belt sag at high loads.
- Profiled link base for smoother in-line product transfers.
- Unique pin-locking system for ease of belt installation.
- Fully interchangeable with uni QNB belt system.



Local Contacts

... and 150 more service contact points
at ammeraalbeltech.com

Argentina

T +54 11 4218 2906
info-ar@ammeraalbeltech.com

Australia

T +61 3 8780 6000
info-au@ammeraalbeltech.com

Austria

T +43 171728 133
info-de@ammeraalbeltech.com

Belgium

T +32 2 466 03 00
info-be@ammeraalbeltech.com

Canada

T +1 905 890 1311
info-ca@ammeraalbeltech.com

Chile

T +56 2 233 12900
info-cl@ammeraalbeltech.com

China

T +86 512 8287 2709
info-cn@ammeraalbeltech.com

Colombia

T +57 1 893 9890
info-co@ammeraalbeltech.com

Czech Republic

T +420 567 117 211
info-cz@ammeraalbeltech.com

Denmark

T + 45 7572 3100
info-dk@ammeraalbeltech.com

Finland

T +358 207 911 400
info-fi@ammeraalbeltech.com

France

T +33 3 20 90 36 00
info-fr@ammeraalbeltech.com

Germany

T +49 4152 937-0
info-de@ammeraalbeltech.com

Hungary

T +36 30 311 6099
info-hu@ammeraalbeltech.com

India

T +91 44 265 34 244
info-in@ammeraalbeltech.com

Israel

T +972 4 6371485
info-il@ammeraalbeltech.com

Italy

T +39 051 660 60 06
info-it@ammeraalbeltech.com

Japan

T +81 52 433 7400
info-jp@ammeraalbeltech.com

Luxembourg

T +352 26 48 38 56
info-lu@ammeraalbeltech.com

Malaysia

T +60 3 806 188 49
info-my@ammeraalbeltech.com

Mexico

T +52 55 5341 8131
info-mx@ammeraalbeltech.com

Netherlands

T +31 72 57 51212
info-nl@ammeraalbeltech.com

Peru

T +51 1 713 0069
info-pe@ammeraalbeltech.com

Poland

T +48 32 44 77 179
info-pl@ammeraalbeltech.com

Portugal

T +351 22 947 94 40
info-pt@ammeraalbeltech.com

Singapore

T +65 62739767
info-sg@ammeraalbeltech.com

Slovakia

T +421 255648542
info-sk@ammeraalbeltech.com

South Korea

T +82 31 448 3613-7
info-kr@ammeraalbeltech.com

Spain

T +34 93 718 3054
info-es@ammeraalbeltech.com

Sweden

T +46 (0) 10 130 96 00
info-se@ammeraalbeltech.com

Switzerland

T +41 55 2253 535
info-ch@ammeraalbeltech.com

Thailand

T +66 2 902 2604-13
info-th@ammeraalbeltech.com

Turkey

T +90 232 877 0700
info-tr@ammeraalbeltech.com

United Kingdom

T +44 1992 500550
info-uk@ammeraalbeltech.com

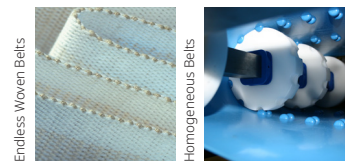
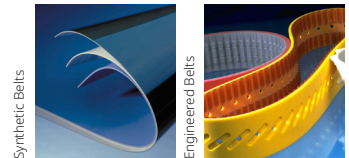
United States

T +1 847 673 6720
info-us@ammeraalbeltech.com

Vietnam

T +84 8 376 562 05
info-vn@ammeraalbeltech.com

**Expert advice, quality solutions
and local service
for all your belting needs**



General contact information:

Ammeraal Beltech
P.O. Box 38
1700 AA Heerhugowaard
The Netherlands

T +31 (0)72 575 1212
info@ammeraalbeltech.com

ammera.com